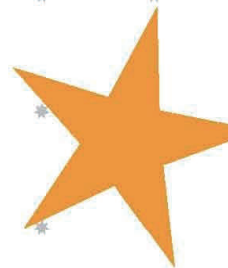
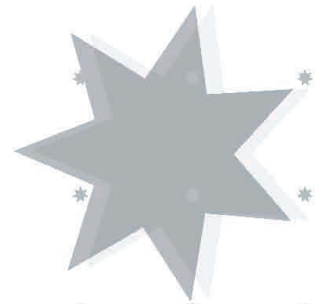
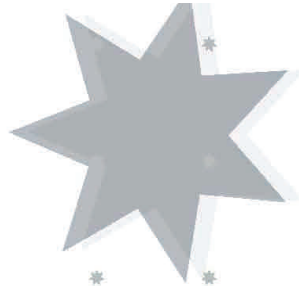


AUSTRALASIAN
Gaming Council

ABN 64 092 720 753



A Database
on Australia's Gambling Industry

Chapter 1

2009/10

A Database

On Australia's Gambling Industry

Published and Prepared by the Australasian Gaming Council (AGC).

Address: Level 40/140 William Street
Melbourne 3000
Victoria Australia

Phone +61 3 9229 3801

Fax +61 3 9607 8282

Email info@austgamingcouncil.org.au

Web www.austgamingcouncil.org.au

This publication is copyright. No part may be reproduced by any process except in accordance with the provisions of the Copyright Act 1986

DISCLAIMER

Whilst a great deal of care has been taken in the preparation of this publication, it is nevertheless necessary to caution users with regard to its accuracy.

The information contained in this publication has been obtained from external sources and has not been independently verified by the Australasian Gaming Council ("the Council"). The Council expressly disclaims all and any liability (including all liability from or attributable to any neglect or wrongful act or omission) to any persons in respect of anything done or omitted to be done by any person in reliance whether in whole or in part upon any material in this publication.

The Australasian Gaming Council welcomes comments and suggestions on this publication.

Please contact info@austgamingcouncil.org.au

Chapter 1

Overview

AUSTRALIAN STATISTICS AT A GLANCE

	Turnover ¹	Spend per capita ^{1,2}	Total spend ^{1,3}	Businesses ⁴	Tax Collected ¹
	\$m	\$	\$m	No.	\$m
Wagering ⁵	19,858	159	2,594	4,572 ⁶	382
Gaming machines ⁷	108,973	626	10,184	5,691 ⁸	2,971
Lotteries ⁹	4,417	114	1,856	4,987 ¹⁰	1,200
Casinos ¹¹	18,500 ¹²	198	3,221	13	396
Other ¹³	963	15	244	na	2
Total	152,711	1,112	18,100	15,263⁴	4,951

¹ Office of Economic and Statistical Research (2010), Australian Gambling Statistics 26th Edition. Refer to Appendix for explanatory notes. Figures relate to 2007-08

² Due to rounding total may not equal sum of individual values

³ Due to rounding total may not equal sum of individual values

⁴ The number of businesses providing gambling services in Australia refers to the number of gambling forms available within venues; therefore it does not correspond to the number of venues. For example, where a hotel has both gaming machines and a TAB agency on the premises, the number of businesses at the hotel is given as 2. This holds for all businesses except casinos, where all gambling forms within the casino (with the exception of TABs) have been classed as 1 business. Subsequently, these figures cannot be compared to *A Database on Australia's Gambling Industries October 2002* - Australasian Gaming Council

⁵ Includes racing and sports betting

⁶ This figure includes TAB facilities in retail outlets (standalone shops), clubs, pubs, taverns, hotels, casinos, oncourse and other.

⁷ Does not include gaming machines in casinos unless otherwise specified

⁸ State/territory Gaming Authority Annual Reports. This figure includes hotels and clubs with gaming machines (does not incorporate casinos)

⁹ Includes lottery, lotto, tattsлото and instant lottery and pools

¹⁰ Industry interviews (as at January 2010)

¹¹ Includes wagers on table games, gaming machines and keno systems

¹² Caution should be taken in interpreting casino turnover as this represents 'handle' (rather than true turnover).

¹³ Includes minor gaming, interactive gaming and keno for turnover and expenditure statistics but keno is distributed between lotteries and gaming machines in the taxation category.