

Problem Gambling in Australia

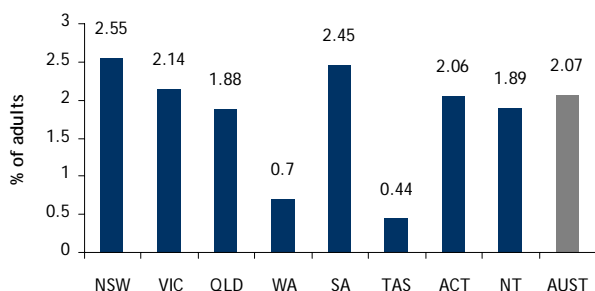
The Productivity Commission report estimated that 2.1% of Australian adults had a problem with their gambling in 1997-98.

Prevalence of Problem Gambling in Australia (SOGS)

The South Oaks Gambling Screen (SOGS) was developed in 1987. The prime focus of this measurement is on the financial aspects of gambling, whether gamblers have difficulty controlling their gambling and feelings of guilt.

Productivity Commission report conducted a nationwide survey of problem gambling prevalence in 1997-98 using SOGS.

Productivity Commission estimate of the proportion of problem gamblers (SOGS) in Australia by state/territory (1997-98)¹



Note: The prevalence result for problem gambling in South Australia was relatively high compared to other states, probably reflecting a sampling error.

Other SOGS results around Australia (2000-2006)

Jurisdiction	Year	Prevalence
NSW	-	-
VIC	2003 ²	1.12
QLD	-	-
SA	2001 ³	2.00
	2005 ⁴	1.90
WA	-	-
TAS	2000 ⁵	0.90
	2005 ⁶	1.41
ACT	2001 ⁷	1.91
NT	2006 ⁸	1.06

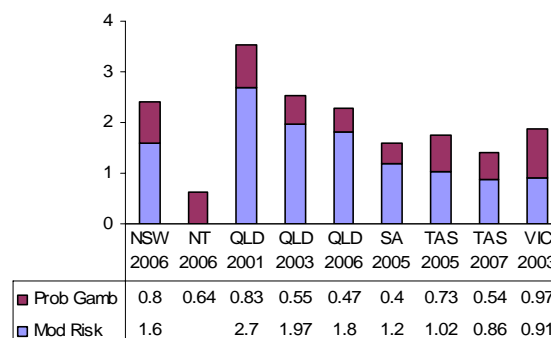
Prevalence of Problem Gambling in Australia (CPGI)

The Canadian Problem Gambling Index (CPGI) was developed to measure the extent of problem gambling in general population surveys and makes a distinction between non-problem gambling, those at risk of developing serious problems, those with moderate gambling problems and those with severe problems.⁹

Recent problem gambling in Australia (CPGI)

Jurisdiction	Year	Prevalence
NSW	2006 ¹⁰	0.80
VIC	2003 ¹¹	0.97
QLD	2006-07 ¹²	0.47
	2003-04 ¹³	0.55
SA	2005 ¹⁴	1.20
WA	-	-
TAS	2007 ¹⁵	0.54
	2005 ¹⁶	0.73
ACT	-	-
NT	2006 ¹⁷	0.64

Results of studies on problem gambling prevalence in Australia using CPGI



The above graph displays all studies undertaken in Australia with CPGI by both the problem gambling (Prob Gamb) and moderate risk (Mod Risk) groups displayed.

1 Productivity Commission (1999) Australia's Gambling Industry. Note: the prevalence result for problem gambling in South Australia was relatively high compared to other states, probably reflecting sampling error.

2 The Centre for Gambling Research ANU (2004), Validation of the Victorian Gambling Screen, Prepared for the Gambling Research Panel by the Centre for Gambling Research UNI, April 2004

3 Taylor A., Dal Grande E., Grill, T., Delfabbro P., Glenn V., Goulding S., Weston H., Barton S., Rogers N., Stanley A., Blandy R., Tolchard B. & Kingston R. Gambling patterns of South Australians and associated health indicators, May 2001

4 South Australian Department for Families and Communities (2006), Gambling Prevalence in South Australia: October to December 2005, June 2006.

-
- 5 Roy Morgan Research (2001), *The Third Study into the Extent and Impact of Problem Gambling in Tasmania with Particular Reference to Problem Gambling*, Prepared for the Tasmanian Gambling Support Bureau, February 2001
 - 6 Roy Morgan Research (2006), *The Fourth Study in the Extent of Problem Gambling in Tasmania with Particular Reference to Problem Gambling*, Prepared for the Tasmanian Gambling Support Bureau, June 2006.
 - 7 Tremayne, Kell; Masterman-Smith, Helen and McMillen, Jan (2001), *Survey of the nature and extent of gambling and problem gambling in the ACT, AIGR*, 2001
 - 8 Young, Abu-Duhou, Barnes Creed, Morris, Stevens & Tyler, *Northern Territory Gambling Prevalence Survey 2005*, Charles Darwin University, October 2006
 - 9 Wiebe, J., Single, E. and Falkowski-Ham A. (2001) *Measuring Gambling and Problem Gambling in Ontario*, Canadian Centre on Substance Abuse Responsible Gambling Council (Ontario), November 30.
 - 10 AC Nielson (2007), *Prevalence of Gambling and Problem Gambling in NSW – A Community Survey 2006*, NSW Office of Liquor Gaming and Racing
 - 11 The Centre for Gambling Research Australian National University (2004) *Validation of the Victorian Gambling Screen*, Prepared for the Gambling Research Panel by The Centre for Gambling Research Australian National University, April 2004.
 - 12 Queensland Government, Research and Community Engagement Division (2008), *The Queensland Household Gambling Survey 2006-07*
 - 13 Queensland Government, Research and Community Engagement Division (2006) *The Queensland Household Gambling Survey 2003-04*, May 2006.
 - 14 South Australian Department for Families and Communities (2006) *Gambling Prevalence in South Australia : October to December 2005*, June 2006.
 - 15 South Australian Centre for Economic Studies (2008) *Social and Economic Impact into Gambling in Tasmania*, Report prepared for the Department of Treasury and Finance Tasmania
 - 16 Roy Morgan research (2006) *The Fourth Study into the Extent and Impact of Gambling in Tasmania with Particular Reference to Problem Gambling. Follow up to the Studies Conducted in 1994, 1996 and 2000*. Prepared for the Tasmania Gambling Support Bureau, June 2006.
 - 17 Young, M., Abu-Duhou, I., Barnes, T., Creed, E., Morris, M., Stevens, M. & Tyler, B (2006) *Northern Territory Gambling Prevalence Survey 2005*, Charles Darwin University, October 2006.

DISCLAIMER: *The information contained in this publication has been obtained from external sources and has not been independently verified by the Australasian Gaming Council. The Australasian Gaming Council excludes liability for loss suffered by any person resulting in any way from the use of, or reliance on this publication.*