



A GUIDE TO AUSTRALASIA'S GAMBLING INDUSTRIES

Facts, Figures and Statistics

CHAPTER THREE

Australia's Gambling Expenditure

2016/17

A Guide to Australasia's Gambling Industries

Published and Prepared by the Australasian Gaming Council (AGC).



GPO Box 99,
Melbourne 3001
Victoria Australia
+61 3 9670 4175

info@austgamingcouncil.org.au

www.austgamingcouncil.org.au

DISCLAIMER

Whilst a great deal of care has been taken in the preparation of this publication, it is nevertheless necessary to caution users with regard to its accuracy.

The information contained in this publication has been obtained from external sources and has not been independently verified by the Australasian Gaming Council ("the Council").

The Council expressly disclaims all and any liability (including all liability from or attributable to any neglect or wrongful act or omission) to any persons in respect of anything done or omitted to be done by any person in reliance whether in whole or in part upon any material in this publication.

The Australasian Gaming Council welcomes comments and suggestions on this publication. Please contact info@austgamingcouncil.org.au

This publication is copyright. No part may be reproduced by any process except in accordance with the provisions of the Copyright Act 1986.

Chapter 3

Australia's Gambling Expenditure

OVERVIEW	2
AGGREGATE AND PER CAPITA EXPENDITURE - SUMMARY	2
EXPENDITURE ON GAMBLING	3
AGGREGATE	3
PER CAPITA	4
TEN YEAR EXPENDITURE TREND	5
CASINOS	5
GAMING MACHINES	6
LOTTERY	6
RACING	7
SPORTS BETTING	8
ALL GAMBLING	9
PRICE OF GAMBLING: COST OF PLAY, HOUSE EDGE & RETURN TO PLAYER (RTP)	11
HOUSEHOLD DISPOSABLE INCOME	13
HOUSEHOLD DISPOSABLE INCOME AND GAMBLING	13
RACING VERSUS GAMING	14
HOUSEHOLD SPENDING COMPARISON	16

Version Control

Version	Date	Explanation
2015-16 (1.0)	November 2016	2015-16 Edition.
2015-16 (2.0)	November 2017	2015-16 Edition updated with statistics from <i>Australian Gambling Statistics</i> , 33rd Edition.
2016-17 (1.0)	May 2019	2016-17 Edition. Updated with statistics from <i>Australian Gambling Statistics</i> , 34th Edition.

OVERVIEW

Aggregate and per capita expenditure - summary

Table 3-1 Summary: Aggregate and per capita gambling expenditure in Australia by state/territory (2016-17)

		Casino ¹	Gaming machines ²	Keno	Lotteries ³	Minor Gaming	Racing	Sports Betting	All
ACT									
Aggregate	\$ million	34.480	168.754	2.705	18.395	-	17.422	-	241.756
Per capita	\$	109.03	533.62	8.55	58.17		55.09		764.46
NSW									
Aggregate	\$ million	1,543.554	6,188.420	160.027	511.096	-	976.181	152.295	9,531.573
Per capita	\$	254.43	1020.06	26.38	84.25		160.91	25.10	1,571.13
NT									
Aggregate	\$ million	97.125	92.648	13.754	42.457	-	1,148.141	460.880	1,855.012
Per capita	\$	530.41	505.96	75.11	231.86		6,270.11	2,516.91	10,130.39
QLD									
Aggregate	\$ million	715.859	2,286.277	101.148	410.456	-	323.661	18.294	3,855.696
Per capita	\$	191.25	610.79	27.02	109.66		86.47	4.89	1,030.07
SA									
Aggregate	\$ million	135.565	680.275	24.028	119.562	-	107.279	8.637	1,075.346
Per capita	\$	100.22	502.93	17.76	88.39		79.31	6.39	795.01
TAS									
Aggregate	\$ million	84.340	110.328	31.773	38.476	-	40.731	3.378	309.027
Per capita	\$	207.50	271.43	78.17	94.66		100.21	8.31	760.27
VIC									
Aggregate	\$ million	1,556.268	2,609.530	23.354	499.623	-	458.774	327.491	5,475.040
Per capita	\$	318.67	534.34	4.78	102.31		93.94	67.06	1,121.10
WA									
Aggregate	\$ million	622.849	-	-	361.458	34.350	240.524	91.025	1,350.206
Per capita	\$	314.85			182.72	17.36	121.59	46.01	682.54
AUST									
Aggregate	\$ million	4,790.041	12,136.232	356.790	2,001.524	34.350	3,312.714	1,062.000	23,693.655
Per capita	\$	252.99	640.98	18.84	105.70	1.81	174.96	56.09	1,251.39

Please note that due to rounding totals may not equal the sum of individual values.

Source: Government Statistician, Queensland Treasury and Trade (2018) Australian Gambling Statistics 1991-92 to 2016-17 (34th edition). Refer to Australian Gambling Statistics [Explanatory Notes](#) for further information.

Gambling expenditure in Australia in 2016-17 amounted to \$23.69 billion AUD. Expenditure on gaming machines totalled \$12.1 billion and accounted for approximately 51.1% of all expenditure on the various gambling forms available.

Expenditure on casino gambling accounted for 20.3% of Australian spend (\$4.8 billion). On the available figures, racing accounted for 13.9% (\$3.3 billion) while Sports Betting represented 4.6% (\$1.1 billion) and Keno 1.5% (\$356.8 million) of expenditure. Expenditure on lottery products and pools (\$2.0 billion) accounted for a further 8.4%.

In 2016-17 the average gambling expenditure in Australia per adult was \$1,251.39 – a figure comprised of sums spent on racing (\$174.96 per adult), sports betting (\$56.09), lotteries (\$105.70), gaming machines (\$640.98), casinos (\$252.99) and Keno (\$18.84).

The Northern Territory had the highest expenditure per adult in Australia, although it should be noted that a significant proportion of NT gambling business is derived from interstate and international markets. Western Australia and the TAS reported the lowest aggregate expenditure figures per adult, at \$682.54 and \$760.27 respectively per capita.

¹ Includes wagers on table games, gaming machines and keno systems.

² Excludes gaming machines at casinos.

³ Includes lottery, lotto, Tattsлото, instant lottery and pools.

EXPENDITURE ON GAMBLING

Aggregate

Table 3-2 Aggregate gambling expenditure in Australia (2016-17) (\$million)

GAMBLING FORM	ACT	NSW	NT	QLD	SA	TAS	VIC	WA	AUSTRALIA
GAMING					\$ million				
Casino	34.480	1,543.554	97.125	715.859	135.565	84.340	1,556.268	622.849	4,790.041
Gaming machines	168.754	6,188.420	92.648	2,286.277	680.275	110.328	2,609.530	0.000	12,136.232
Instant lottery	1.710	41.121	1.639	73.250	10.717	4.638	20.131	33.739	186.945
Interactive gaming	0.000	0.000	0.005	0.000	0.000	0.000	0.000	0.000	0.005
Keno	2.705	160.027	13.754	101.148	24.028	31.773	23.354	0.000	356.790
Lottery	0.415	44.031	0.000	0.000	0.000	0.243	0.000	0.000	44.689
Lotto, Tattslotto	16.222	423.825	40.707	335.962	108.545	33.497	478.294	327.068	1,764.121
Minor Gaming	0.000	0.000	0.000	0.000	0.000	0.000	0.000	34.350	34.350
Pools	0.048	2.119	0.111	1.244	0.300	0.098	1.198	0.651	5.769
Total	224.334	8,403.097	245.990	3,513.740	959.430	264.918	4,688.775	1,018.657	1,9318.941
RACING									
Off-course bookmaker	0.000	0.000	0.000	0.000	0.104	0.000	0.000	0.000	0.104
On-course bookmaker	0.085	30.903	1,135.741	0.000	0.308	0.047	0.000	0.995	1,168.079
On-course totalisator	0.107	8.344	0.900	0.000	0.000	0.682	27.104	4.669	41.806
TAB	17.230	936.934	11.500	323.661	106.867	40.002	431.670	234.860	2,102.725
Total	17.422	976.181	1,148.141	323.661	107.279	40.731	458.774	240.524	3,312.714
SPORTS BETTING									
Bookmaker and other Fixed Odds	0.000	15.669	460.880	0.000	0.072	0.000	0.000	0.001	476.622
Bookmaker and other Pool Betting	0.000	0.000	0.000	0.000	0.000	0.000	0.000	0.000	0.000
TAB Fixed Odds	0.000	132.955	0.000	17.892	8.559	3.377	326.071	90.582	579.436
TAB TOTE Odds	0.000	3.671	0.000	0.402	0.006	0.001	1.420	0.442	5.942
Total	0.000	152.295	460.880	18.294	8.637	3.378	327.491	91.025	1,062.000
ALL GAMBLING	241.756	9,531.573	1,855.012	3,855.696	1,075.346	309.027	5,475.040	1,350.206	23,693.655

Please note that due to rounding totals may not equal the sum of individual values.

Source: Government Statistician, Queensland Treasury and Trade (2018) Australian Gambling Statistics 1991-92 to 2016-17 (34th edition). Refer to Australian Gambling Statistics [Explanatory Notes](#) for further information.

Chapter 3 – Australia's Gambling Expenditure

Per capita

Table 3-3 Per capita gambling expenditure in Australia (2016-17)

GAMBLING FORM	ACT	NSW	NT	QLD	SA	TAS	VIC	WA	AUSTRALIA
GAMING									
	\$ (value)								
Casino	109.03	254.43	530.41	191.25	100.22	207.50	318.67	314.85	252.99
Gaming machines	533.62	1,020.06	505.96	610.79	502.93	271.43	534.34	0.00	640.98
Instant lottery	5.41	6.78	8.95	19.57	7.92	11.41	4.12	17.06	9.87
Interactive gaming	0.00	0.00	0.02	0.00	0.00	0.00	0.00	0.00	0.00
Keno	8.55	26.38	75.11	27.02	17.76	78.17	4.78	0.00	18.84
Lottery	1.31	7.26	0.00	0.00	0.00	0.60	0.00	0.00	2.36
Lotto, Tattslotto	51.30	69.86	222.31	89.75	80.25	82.41	97.94	165.33	93.17
Minor Gaming	0.00	0.00	0.00	0.00	0.00	0.00	0.00	17.36	1.81
Pools	0.15	0.35	0.61	0.33	0.22	0.24	0.25	0.33	0.30
Total	709.37	1,385.12	1,343.37	938.71	709.31	651.76	960.10	514.94	1,020.34
RACING									
Off-course bookmaker	0.00	0.00	0.00	0.00	0.08	0.00	0.00	0.00	0.01
On-course bookmaker	0.27	5.09	6,202.39	0.00	0.23	0.12	0.00	0.50	61.69
On-course totalisator	0.34	1.38	4.91	0.00	0.00	1.68	5.55	2.36	2.21
TAB	54.48	154.44	62.80	86.47	79.01	98.41	88.39	118.72	111.06
Total	55.09	160.91	6,270.11	86.47	79.31	100.21	93.94	121.59	174.96
SPORTS BETTING									
Bookmaker and other Fixed Odds	0.00	2.58	2,516.91	0.00	0.05	0.00	0.00	0.00	25.17
Bookmaker and other Pool Betting	0.00	0.00	0.00	0.00	0.00	0.00	0.00	0.00	0.00
TAB Fixed Odds	0.00	21.92	0.00	4.78	6.33	8.31	66.77	45.79	30.60
TAB TOTE Odds	0.00	0.61	0.00	0.11	0.00	0.00	0.29	0.22	0.31
Total	0.00	25.10	2,516.91	4.89	6.39	8.31	67.06	46.01	56.09
ALL GAMBLING	764.46	1,571.13	10,130.39	1,030.07	795.01	760.27	1,121.10	682.54	1,251.39

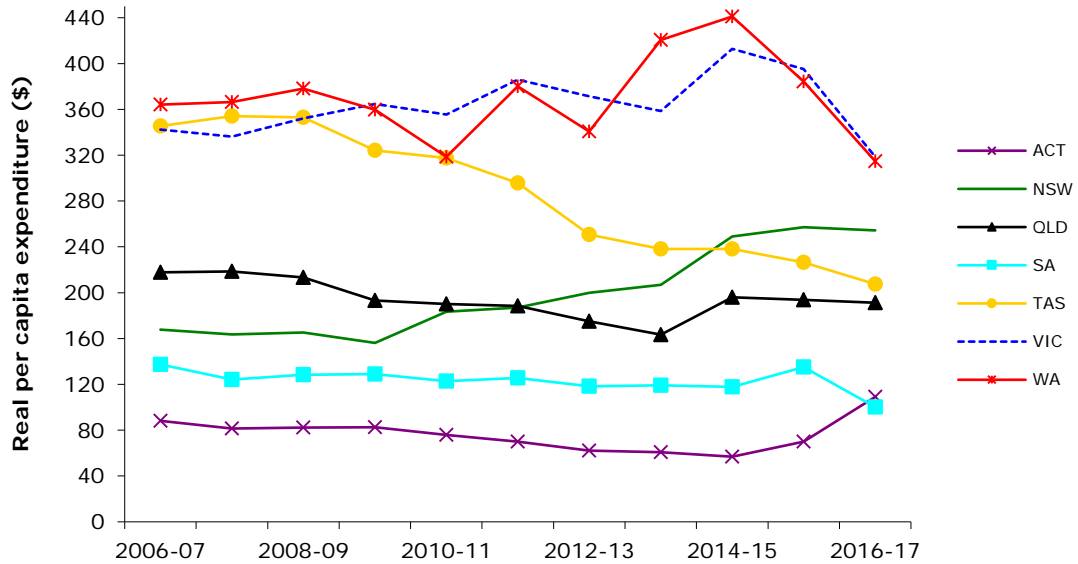
Please note that due to rounding totals may not equal the sum of individual values.

Source: Government Statistician, Queensland Treasury and Trade (2018) Australian Gambling Statistics 1991-92 to 2016-17 (34th edition). Refer to Australian Gambling Statistics [Explanatory Notes](#) for further information.

TEN YEAR EXPENDITURE TREND

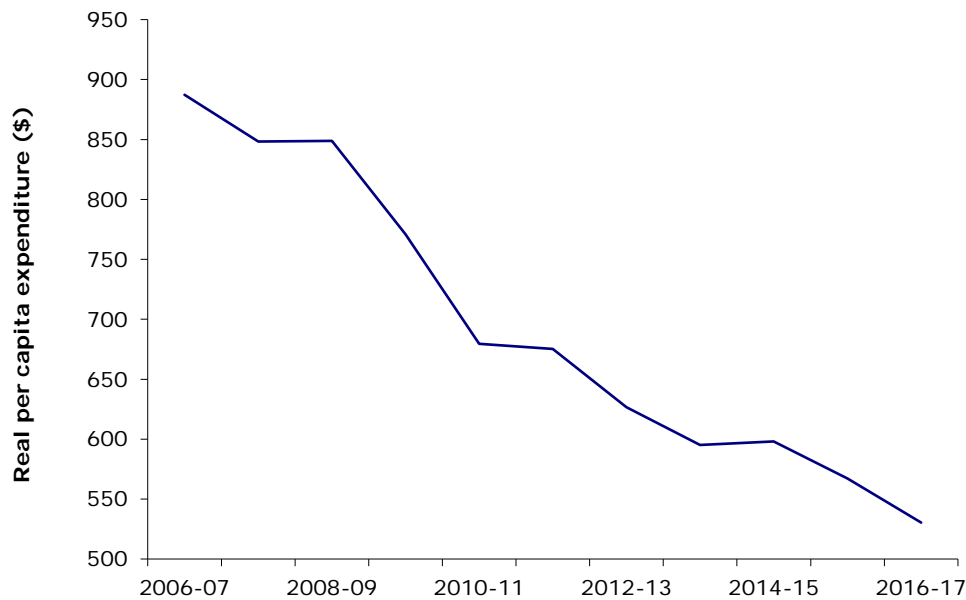
Casinos

Figure 3-1 Real per capita casino expenditure - Australia (excluding NT) (2006-07 to 2016-17)



Source: Government Statistician, Queensland Treasury and Trade (2018) Australian Gambling Statistics 1991-92 to 2016-17 (34th edition). Refer to Australian Gambling Statistics [Explanatory Notes](#) for further information.

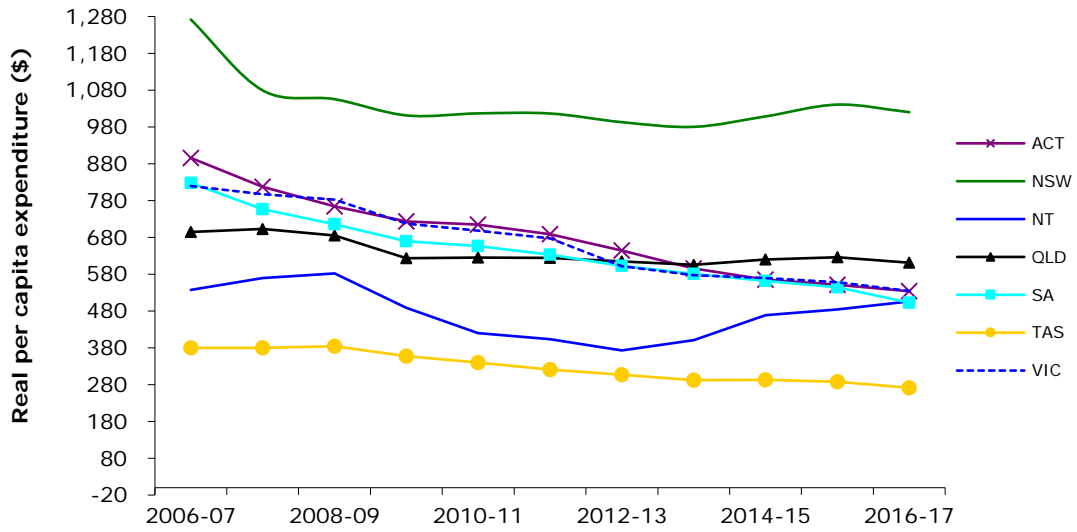
Figure 3-2 Real per capita casino expenditure – Northern Territory (2006-07 to 2016-17)



Source: Government Statistician, Queensland Treasury and Trade (2018) Australian Gambling Statistics 1991-92 to 2016-17 (34th edition). Refer to Australian Gambling Statistics [Explanatory Notes](#) for further information.

Electronic Gaming Machines

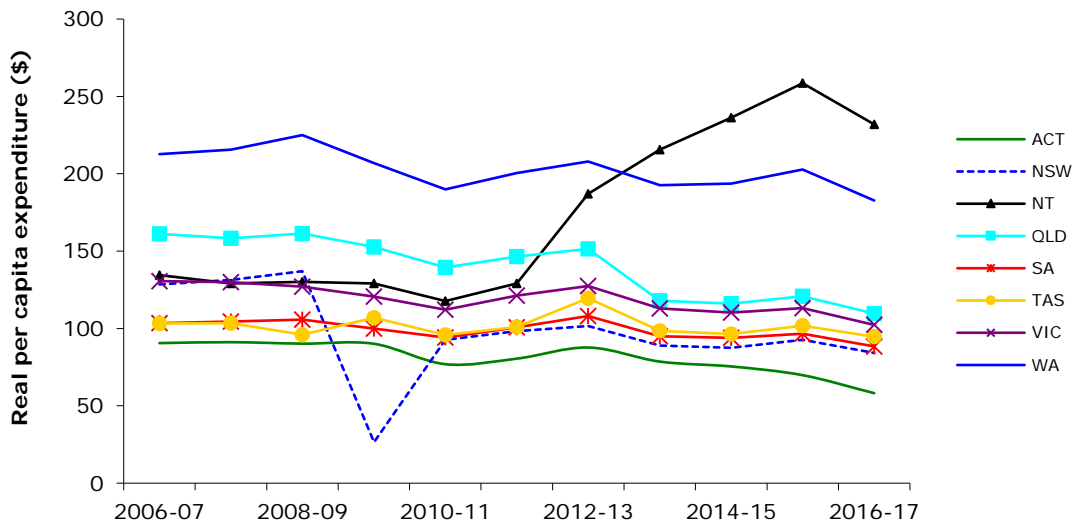
Figure 3-3 Real per capita EGM expenditure – Australia (2006-07 to 2016-17)



Source: Government Statistician, Queensland Treasury and Trade (2018) Australian Gambling Statistics 1991-92 to 2016-17 (34th edition). Refer to Australian Gambling Statistics [Explanatory Notes](#) for further information.

Lottery

Figure 3-4 Real per capita lottery expenditure – Australia (2006-07 to 2016-17)



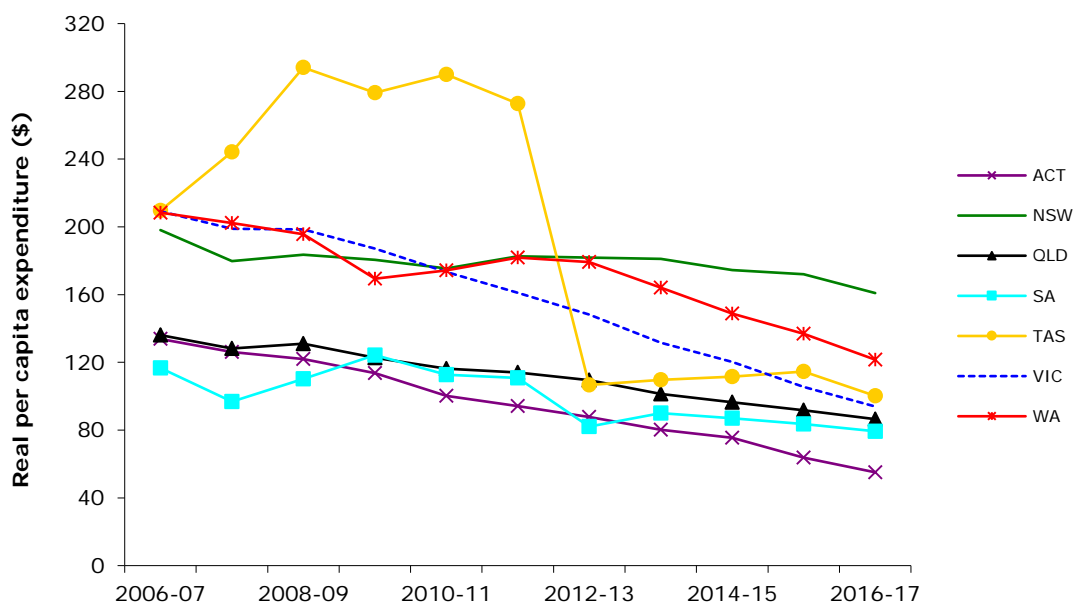
Source: Government Statistician, Queensland Treasury and Trade (2018) Australian Gambling Statistics 1991-92 to 2016-17 (34th edition). Refer to Australian Gambling Statistics [Explanatory Notes](#) for further information.

Lotteries NSW was privatised in late 2010, with the Tatts Group having purchased an exclusive, 40 year licence to conduct public lotteries in NSW – excluding Keno. In the 2009-10 financial year, NSW Lotteries experienced a sharp drop in per capita expenditure.

A sharp increase in expenditure in the Northern Territory from 2012-13 may be attributed to the expansion and integration of Tatts Lotteries in the State, including a new 20-year license agreement.

Racing

Figure 3-5 Real per capita racing expenditure - Australia (excluding NT) (2006-07 to 2016-17)



Source: Government Statistician, Queensland Treasury and Trade (2018) *Australian Gambling Statistics 1991-92 to 2016-17 (34th edition)*. Refer to *Australian Gambling Statistics Explanatory Notes* for further information.

Tasmania has experienced significant fluctuations in race wagering expenditure over a ten year period. First, there was a large increase in expenditure resulting from the introduction of Betfair in 2005, Australia's only betting exchange.

Expenditure figures for racing subsequently decreased, by almost two thirds, subsequent to the TattsBet acquisition of TOTE Tasmania in March 2012.

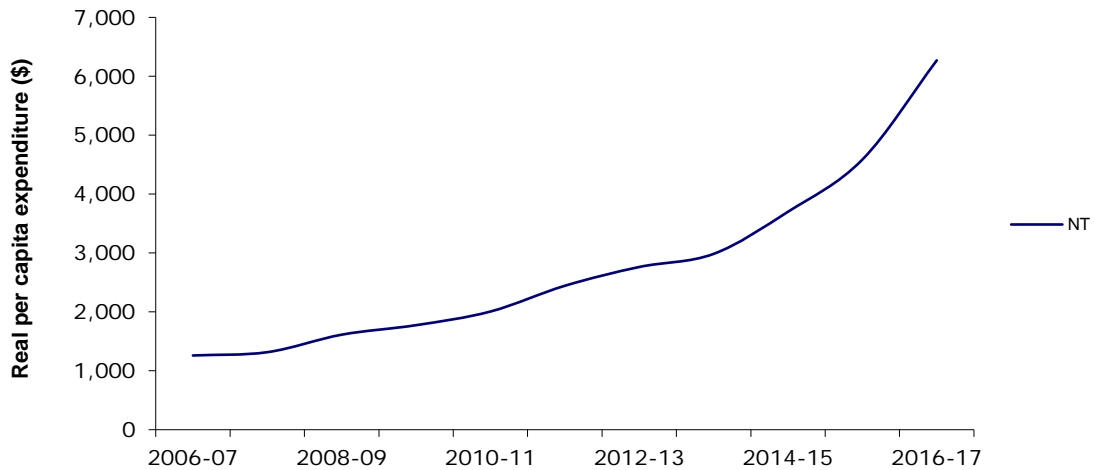
TattsBet no longer takes bets from the high stakes professional punters that the former TOTE previously accepted, which may explain the significant reduction in race wagering expenditure figures.⁴

Note: Racing expenditure data is incomplete for South Australia and not available from 2013-14.⁵

⁴ Government Statistician, Queensland Treasury and Trade (2014) *Australian Gambling Statistics 1987-88 to 2012-13 (30th edition)*.

⁵ Government Statistician, Queensland Treasury and Trade (2015) *Australian Gambling Statistics 1988-89 to 2013-14 (31st edition)*.

Figure 3-6 Real per capita racing expenditure - Northern Territory (2006-07 to 2016-17)

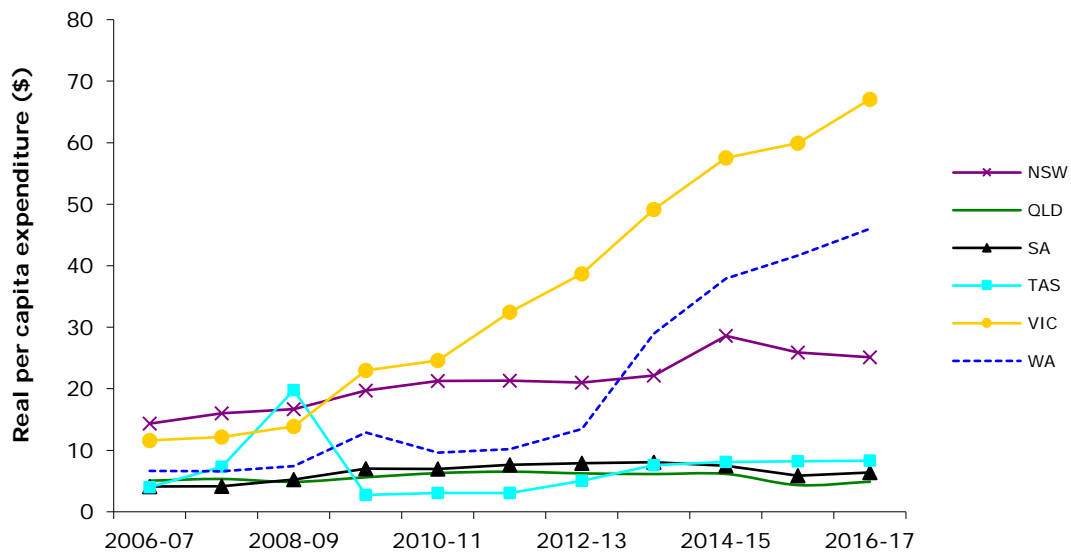


Source: Government Statistician, Queensland Treasury and Trade (2018) *Australian Gambling Statistics 1991-92 to 2016-17 (34th edition)*. Refer to *Australian Gambling Statistics Explanatory Notes* for further information.

The Northern Territory has demonstrated a rapid upward trend in per capita racing expenditure; a reflection of the movement of corporate bookmakers into this jurisdiction.

Sports betting

Figure 3-7 Real per capita sports betting expenditure - Australia (excluding Northern Territory) (2006-07 to 2016-17)

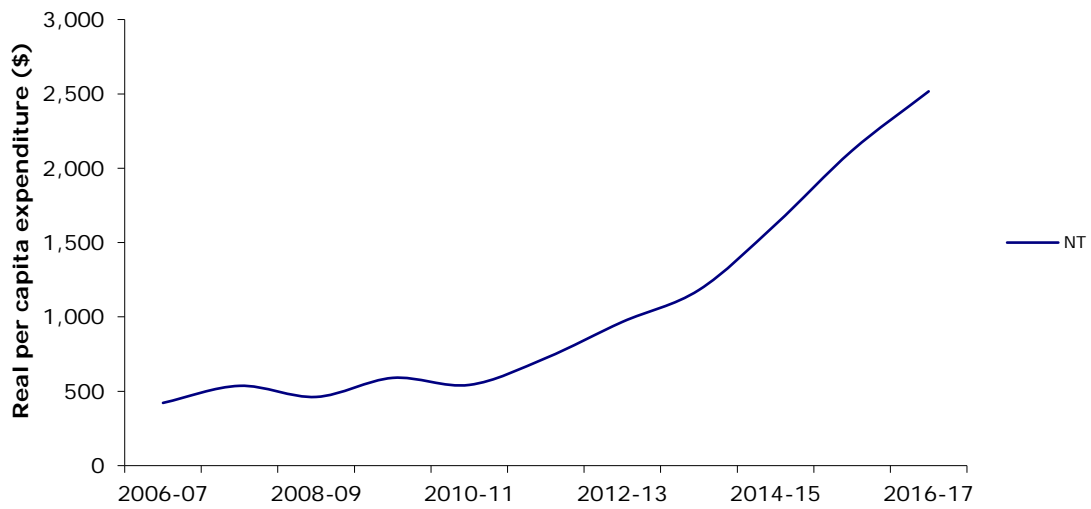


Source: Government Statistician, Queensland Treasury and Trade (2018) *Australian Gambling Statistics 1991-92 to 2016-17 (34th edition)*. Refer to *Australian Gambling Statistics Explanatory Notes* for further information.

The increase in TAB fixed odds sports betting turnover in Tasmania from 2008-09 has been attributed to TOTE Tasmania not being part of the Tabcorp fixed odds betting business TAB Sportsbet.⁶

⁶ Government Statistician, Queensland Treasury and Trade (2014) *Australian Gambling Statistics 1987-88 to 2012-13 (30th edition)*.

Figure 3-8 Real per capita sports betting expenditure - Northern Territory (2006-07 to 2016-17)

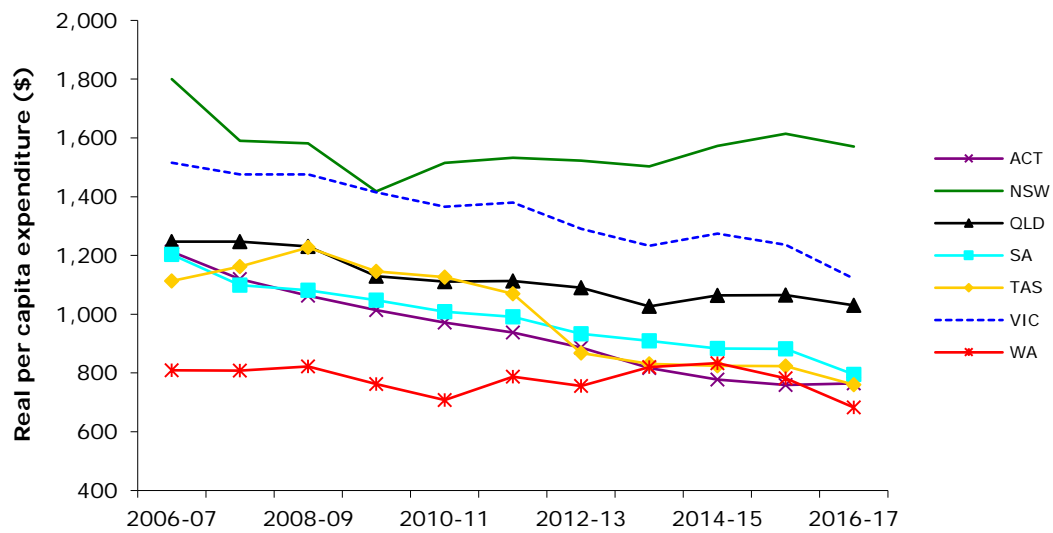


Source: Government Statistician, Queensland Treasury and Trade (2018) Australian Gambling Statistics 1991-92 to 2016-17 (34th edition). Refer to Australian Gambling Statistics [Explanatory Notes](#) for further information.

The Northern Territory has demonstrated a rapid upward trend in per capita Sports Betting expenditure; a reflection of the movement of corporate bookmakers into this jurisdiction.

All Gambling

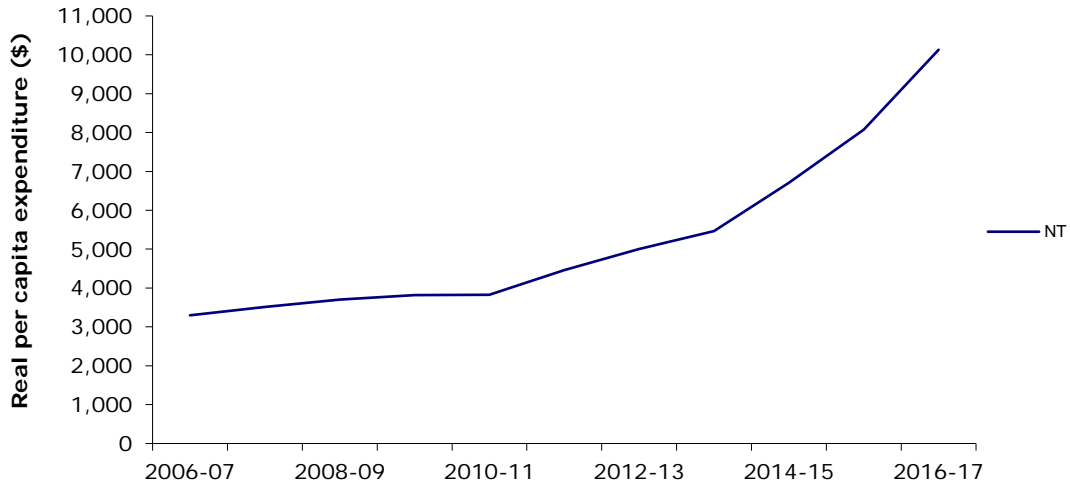
Figure 3-9 Real per capita expenditure - all gambling forms (excluding Northern Territory) (2006-07 to 2016-17)



Source: Government Statistician, Queensland Treasury and Trade (2018) Australian Gambling Statistics 1991-92 to 2016-17 (34th edition). Refer to Australian Gambling Statistics [Explanatory Notes](#) for further information.

Please note that a number of total per capita expenditure figures in the above graph are incomplete due to unavailable data.

Figure 3-10 Real per capita expenditure – all gambling forms (Northern Territory only) (2006-07 to 2016-17)



Source: Government Statistician, Queensland Treasury and Trade (2018) Australian Gambling Statistics 1991-92 to 2016-17 (34th edition). Refer to Australian Gambling Statistics [Explanatory Notes](#) for further information.

Table 3-4 Real per capita expenditure – all gambling forms in Australia by state/territory (2011-12 to 2016-17)

	2011-12	2012-13	2013-14	2014-15	2015-16	2016-17
ACT	937.26	886.08	817.08	777.13	759.26	764.46
NSW	1,532.33	1,522.67	1,503.29	1,573.21	1,614.57	1,571.13
NT	4,459.93	5,006.96	5,465.72	6,706.02	8,078.59	10,130.39
QLD	1,113.54	1,090.37	1,026.60	1,063.80	1,065.64	1,030.07
SA	991.36	933.62	909.36	882.97	882.01	795.01
TAS	1,069.83	868.52	831.31	824.54	823.04	760.27
VIC	1,380.19	1,291.11	1,232.57	1,274.12	1,236.23	1,121.10
WA	787.31	755.40	820.61	833.63	781.98	682.54
Australia	1,300.70	1,262.74	1,237.11	1,288.54	1,300.25	1,251.39

Source: Government Statistician, Queensland Treasury and Trade (2018) Australian Gambling Statistics 1991-92 to 2016-17 (34th edition). Refer to Australian Gambling Statistics [Explanatory Notes](#) for further information.

PRICE OF GAMBLING: COST OF PLAY, HOUSE EDGE & RETURN TO PLAYER (RTP)

According to the Productivity Commission,⁷ there are two measures of the price of gambling - the initial outlay in placing a bet, and the net outlay or cost to a consumer when winnings are taken into account.

Net outlay takes into account not only the initial cost to the consumer, but also any money returned in the form of winnings. This "price" is calculated as the ratio of expenditure⁸ to turnover⁹ - this indicates the percentage of each dollar that, on average for gamblers as a group, over time, is lost.

Another way to understand the price of gambling to the consumer is to calculate the Cost of Play. This can be described as the House Advantage (or House Edge) x Bets per Hour¹⁰ x Amount Bet.

The House Edge is a term used to describe the mathematical advantage of the gambling game or provider. This advantage results in an assured percentage return to the venue over time.

The House Edge assists the gambling provider as a commercial business to cover its costs of providing the game, paying for the staff and maintaining the gambling venue. It also helps to turn the business a profit.

Any profit the business makes from gambling comes from the money gamblers pay into the game, whether it's a poker machine, Keno, Blackjack or other game.¹¹

The flip side of House Edge is known as Return to Player (RTP). RTP is a term used to describe the average percentage of wagered monies that will be paid back to players over time.

It's important to understand that RTP percentages are expected long term averages. Individual players are unlikely to achieve these percentages.

Table 3-5 Player return percentages (RTP) on different forms of gambling¹²

Product	Player Return Percentage
Bingo/Minor Gaming	90.00%
Casino	87.00% ¹³
Instant/Scratchies	60.00%
Interactive Games	85.00% ¹⁴
Keno	75.00% ¹⁴
On-course Tote	84.00%
Pools	50.00% ¹⁴
TAB	84.00%
Tattsлото/Lotto	60.00% ¹⁴
EGMs	87.00% ¹⁴

Source: Casino Control Act 1991(Victoria), Gambling Regulation Act 2003 (Victoria). Gaming Technologies Association, Australian Gaming Machines Player Information Booklet (Victorian figures 1997, Tasmanian Gaming Commission).

⁷ Productivity Commission (1999) *Australia's Gambling Industries, Report No. 10*, Canberra.

⁸ Also referred to as gross profit, expenditure is the net amount lost, or, in other words, the amount wagered less the amount won. Conversely, by definition, it is the gross profit (or gross winnings) due to the operators of each particular form of gambling.

⁹ Turnover is an expression used to describe the amount wagered. This does not include any additional charges that may also be paid at the point of purchase - Tasmanian Gaming Commission (2004) *Australian Gambling Statistics 1977-78 to 2002-03*.

¹⁰ Please note that for various forms of gambling the amount bet per hour may vary. Calculations of this kind generally involve averages. With larger bets and faster play costs may go up accordingly.

¹¹ Excerpted from "Know Your Odds" Tasmanian Government, Department of Health and Human Services. For more information go to <http://knowyourodds.net.au/house-edge/>

¹² Please note that House Edge and RTP may vary by provider— figures specified are either legislated minimum return to player percentages (as footnoted) or average and generalised figures only.

¹³ Casino Control Act 1991 (VIC).

¹⁴ Gambling Regulation Act 2003 (VIC).

For some gambling forms – particularly Electronic Gaming Machines (EGMs) - legislation dictates minimum payout ratios to players.

EGMs must adhere to the returns listed at Table 3-6 (although in practice payout ratios may be set higher than that required by law).

RTP percentages on an EGM are also long-term averages. Individual players are unlikely to achieve these percentages.

To say that a machine is ‘set’ to return a certain percentile to players simply means that the game mathematics are structured in such a way that there is an expectation (over time) that the machine is likely to average a return to players of that percentile of the total bets made on the machine.

As gaming machines function on the basis of chance the player return setting must be understood as an expectation that comes from the rules of chance – it is not a guaranteed outcome.

In fact, gaming machine manufacturers in Australia have pointed out that EGMs are not designed to provide players with money on any regular or long-term basis. Winning sessions may occur, but the more sessions played the greater the likelihood of losses.

For more information see: http://www.gamingta.com/pdf/responsible_gaming_machine_play.pdf, read the Gaming Technologies Association *Player Information Booklet* available at: <http://www.gamingta.com/pdf/playerinfo.pdf> or view responsible gaming machine play videos at <http://gamingta.com/responsible-gaming/>

Table 3-6 Average player return percentages (RTP) for gaming machines in Australia by state/territory (2016)

Location	Casino	Hotels and clubs
Australian Capital Territory	N/A	87%
New South Wales	85%	85%
Northern Territory	88%	85%
Queensland	85%	85%
South Australia	87.5%	87.5%
Tasmania	85%	85%
Victoria	87%	85%
Western Australia	90%	N/A

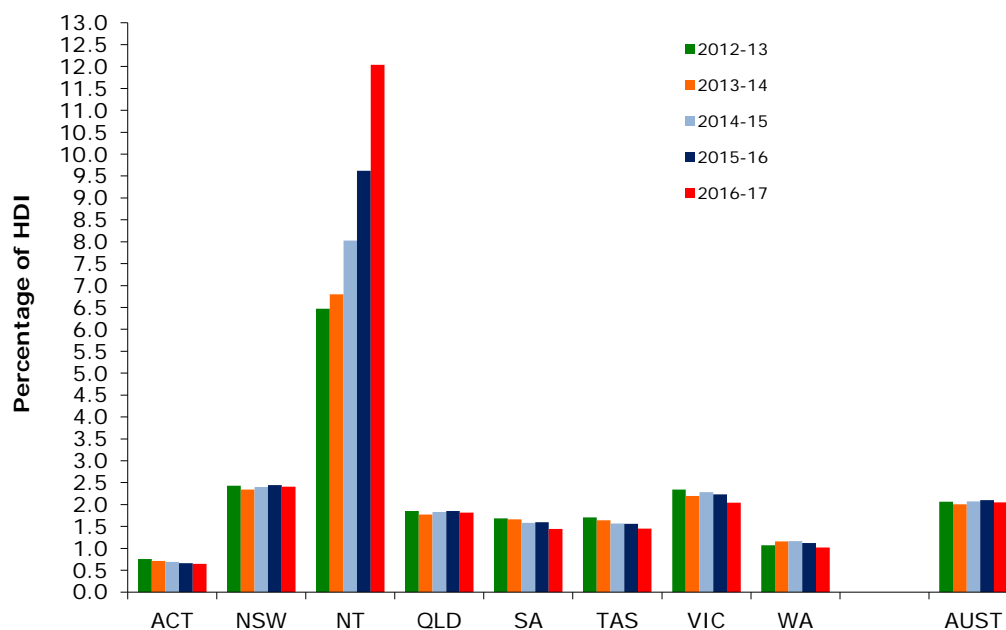
Source: Australian/New Zealand Gaming Machine National Standard 2016

HOUSEHOLD DISPOSABLE INCOME

Household Disposable Income and Gambling

Household Disposable Income (HDI) is the amount of income households have left over after they have paid their income taxes and is considered a key determinant of how much households can spend on consumer goods and services.

Figure 3-11 Proportion of HDI spent on all gambling forms in Australia by state/territory (2012-13 to 2016-17)



Source: Government Statistician, Queensland Treasury and Trade (2018) Australian Gambling Statistics 1991-92 to 2016-17 (34th edition). Refer to Australian Gambling Statistics [Explanatory Notes](#) for further information.

Table 3-7 Proportion of HDI spent on all gambling forms in Australia by state/territory (2012-13 to 2016-17)

	2012-13	2013-14	2014-15	2015-16	2016-17
	%				
ACT	0.76	0.71	0.69	0.66	0.65
NSW	2.43	2.34	2.40	2.45	2.41
NT	6.47	6.80	8.03	9.62	12.04
QLD	1.85	1.77	1.83	1.85	1.81
SA	1.69	1.66	1.58	1.59	1.45
TAS	1.71	1.64	1.57	1.56	1.45
VIC	2.34	2.20	2.29	2.23	2.04
WA	1.07	1.16	1.16	1.12	1.02
AUST	2.07	2.01	2.07	2.10	2.05

Source: Government Statistician, Queensland Treasury and Trade (2018) Australian Gambling Statistics 1991-92 to 2016-17 (34th edition). Refer to Australian Gambling Statistics [Explanatory Notes](#) for further information.

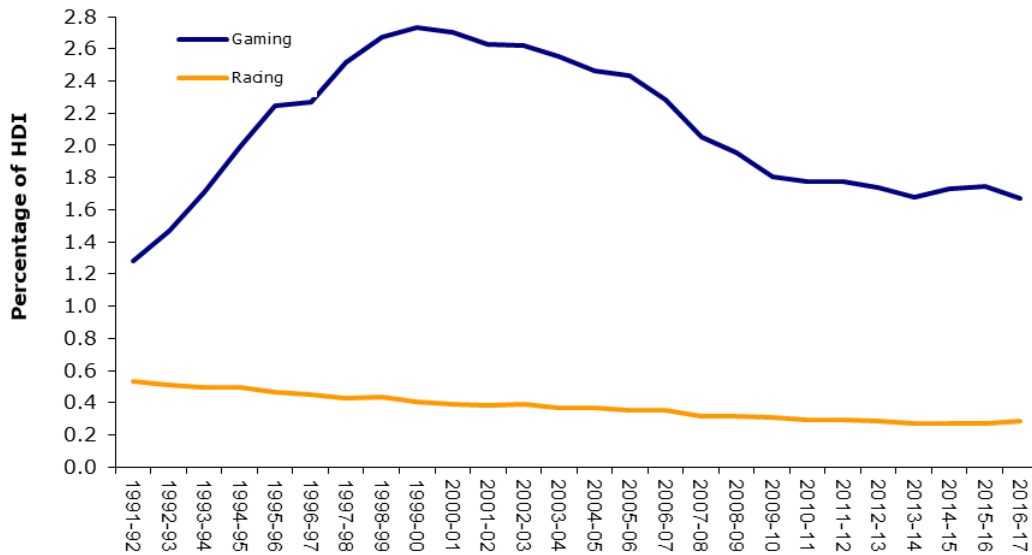
Over the course of the five years covered in Table 3-7, the average proportion of gambling expenditure as a proportion of HDI in Australia has decreased from 2.07% in 2012-13 to 2.05% in 2016-17. The Northern Territory had the highest proportion of expenditure to HDI (12.04% 2016-17) but it must be noted that a significant proportion of its gambling business comes from interstate and international markets.

Other states and territories with a relatively high proportion of gambling expenditure as a proportion of HDI include New South Wales (2.41%) and Victoria (2.04%), while this proportion was relatively low in the ACT (0.65%) and Western Australia (1.02%).

Racing versus gaming

Figure 3-12 shows the change in the spending pattern for gambling in Australia over the past 25 years.

Figure 3-12 Racing and gaming expenditure in Australia as a proportion of household disposable income (1991-92 to 2016-17)



Source: Government Statistician, Queensland Treasury and Trade (2018) Australian Gambling Statistics 1991-92 to 2016-17 (34th edition). Refer to Australian Gambling Statistics [Explanatory Notes](#) for further information.

Table 3-8 Expenditure on various forms of gambling as a proportion of HDI in Australia 2016-17 (%)

	Casino ¹⁵	Gaming machines ¹⁶	Keno	Lotteries ¹⁷	Minor Gaming	Racing ¹⁸	Sports betting	All gambling
	%							
ACT	0.09	0.45	0.01	0.05	-	0.05		0.65
NSW	0.39	1.56	0.04	0.13	-	0.25	0.04	2.41
NT	0.63	0.60	0.09	0.28	-	7.45	2.99	12.04
QLD	0.34	1.08	0.05	0.19	-	0.15	0.01	1.81
SA	0.18	0.91	0.03	0.16	-	0.14	0.01	1.45
TAS	0.40	0.52	0.15	0.18	-	0.19	0.02	1.45
VIC	0.58	0.97	0.01	0.19	-	0.17	0.12	2.04
WA	0.47	-		0.27	0.03	0.18	0.07	1.02
AUST	0.41	1.05	0.03	0.17	0.00¹⁹	0.29	0.09	2.05

Please note that due to rounding totals may not equal the sum of individual values.

Source: Government Statistician, Queensland Treasury and Trade (2018) Australian Gambling Statistics 1991-92 to 2016-17 (34th edition). Refer to Australian Gambling Statistics [Explanatory Notes](#) for further information.

Table 3-8 shows racing expenditure as a proportion of Household Disposable Income (HDI) was 0.29% across Australia.

This percentage was highest in the Northern Territory (7.45%), although it should be noted that a significant proportion of racing business comes from interstate and international markets.

In relation to gaming machines across Australia, the average proportion of expenditure to HDI was 1.05% - exceeded by New South Wales (1.56%). In contrast, spending on gaming machines in the ACT represented only 0.45% of HDI, closely followed by Tasmania at 0.52% of HDI.

Spending on casino gambling in Australia during 2016-17 represented an average of 0.41% of HDI.

Again, due to the significant business sourced externally, the Northern Territory far exceeds the national average in terms of spending on Sports Betting with a proportion of 2.99% of HDI, compared to only 0.09% across Australia.

¹⁵ Includes wagers at casinos on table games, gaming machines and keno systems.

¹⁶ Does not include gaming machines at casinos.

¹⁷ Includes lottery, lotto / tattsлото, instant lottery and pools.

¹⁸ Total racing expenditure is incomplete due to unavailable figures.

¹⁹ Figure reads 0.003.

HOUSEHOLD SPENDING COMPARISON

The Australia Bureau of Statistics regularly produces a Household Expenditure Survey recording the expenditure of Australian households. Data is collected every six years, with the most recent collection taking place in 2015-16.

In 2015-16 the Australian Bureau of Statistics' Household Expenditure Survey recorded the expenditure of 10,046 households.

Most expenditure data was collected over a two-week period during which the respondents were asked to keep a diary of all expenses.²⁰

Table 3-9 Estimated average household weekly expenditure (\$) on gambling by household gross income quintile in Australia (2015-16, 2009-10, 2003-04 & 1998-99)

Year	Household gross income quintile					All households
	Lowest	Second	Third	Fourth	Highest	
2015-16	\$2.26 ²⁵	\$3.46	\$5.17	\$5.36 ²⁵	\$6.06	\$4.44
2009-10	\$4.22 ²¹	\$3.97 ²²	\$7.06	\$5.58	\$8.47	\$5.86
2003-04	\$3.67	\$5.59	\$3.89 ²³	\$6.30	\$7.98	\$5.48
1998-99	\$3.15	\$5.03	\$5.53	\$7.85	\$7.46	\$5.80

Source: ABS 6530.0 (2017, 2011, 2005, 2000), Household Expenditure Survey, Australia: Summary of Results, 2015-16 (Gross Household Income Quintiles – Estimates, Table 4.3A), and ABS 6535 series 2003-04 & 1998-99 Household Expenditure Survey, Australia

Table 3-10 Estimated average household weekly expenditure on gambling as a percentage of total goods and services expenditure by household gross income quintile in Australia (2015-16, 2009-10, 2003-04 & 1998-99)

Year	Household gross income quintile					All households
	Lowest	Second	Third	Fourth	Highest	
2015-16	0.4%	0.4%	0.4%	0.3%	0.2%	0.3%
2009-10	0.8%	0.5%	0.6%	0.4%	0.4%	0.5%
2003-04	0.9%	0.9%	0.5%	0.6%	0.5%	0.6%
1998-99	0.9%	1.0%	0.9%	0.9%	0.6%	0.8%

Source: ABS 6530.0 (2017, 2011, 2005, 2000), Household Expenditure Survey, Australia: Summary of Results, 2015-16 (Gross Household Income Quintiles – Estimates, Table 4.3A), and ABS 6535 series 2003-04 & 1998-99 Household Expenditure Survey, Australia

Weekly expenditure on gambling products as a proportion of expenditure on total goods and services is trending down across all household income quintiles since the previous survey period.

The lowest quintile group spent \$2.26 per week on gambling, a decrease of 46.4% compared to 2009-10 (\$4.22 per week). Overall, average household weekly expenditure on gambling products as a proportion of expenditure on total goods and services decreased by 24.2% since the previous survey (from \$5.86 to \$4.44 per week).

²⁰ Please note: the survey was based on self-report. Gambling expenditure documented in this manner may be under-reported.

²¹ Relative Standard Error of over 25%.

²² Relative Standard Error of over 50% and is considered too unreliable for general use.

²³ Estimate has a relative standard error of 25% to 50% and should be used with caution.

Table 3-11 Estimated average household weekly expenditure on selected goods and services by household gross income quintile in Australia by expenditure (\$) and proportion of total expenditure (%) (2015-16)

	Lowest		Second		Third		Fourth		Highest		All	
	\$	%	\$	%	\$	%	\$	%	\$	%	\$	%
Audio-visual equipment (TV, home entertainment)	3.13	0.5	4.02	0.4	7.21	0.6	11.08	0.7	13.89	0.5	7.93	0.6
Beer	4.65	0.7	8.89	1.0	13	1.0	12.44	0.7	18.26	0.7	11.5	0.8
Books, newspapers, magazines	4.21	0.7	5.46	0.6	5.8	0.4	6.76	0.4	9.72	0.4	6.43	0.5
Clothing and footwear	14.06	2.2	24.1	2.6	39.32	3.0	53.33	3.2	87.77	3.4	43.75	3.1
Confectionery	6.75	1.1	9.81	1.0	13.35	1.0	15.99	1.0	19.13	0.7	13.01	0.9
Cultural (cinema, theatre, concerts)	2.4	0.4	4.17	0.4	5.75	0.4	9.36	0.6	15.55	0.6	7.45	0.5
Dairy products	9.15	1.4	12.55	1.3	15.14	1.2	17.74	1.1	21.01	0.8	15.11	1.1
Gambling	2.26	0.4	3.46	0.4	5.17	0.4	5.36	0.3	6.06	0.2	4.44	0.3
Holidays-Australia (selected expenses)	13.09	2.1	19.6	2.1	23.51	1.8	33.4	2.0	66.24	2.6	31.26	2.2
Internet charges	3.47	0.5	5.23	0.6	6.85	0.5	7.91	0.5	8.81	0.3	6.47	0.5
Meals out and fast foods	25.68	4.1	43.66	4.7	71.13	5.5	103.04	6.2	158.63	6.1	80.27	5.6
Mobile telephone account	6.98	1.1	11.55	1.2	18.1	1.4	22.81	1.4	26.8	1.0	17.24	1.2
Mortgage repayments (interest)	17.59	2.8	32.88	3.5	72.52	5.6	115.7	6.9	163.39	6.3	80.19	5.6
Pay TV fees	2.07	0.3	3.11	0.3	4.68	0.4	5.03	0.3	8	0.3	4.56	0.3
Petrol	17.87	2.8	28.77	3.1	43.28	3.3	45.5	2.7	51.9	2.0	37.52	2.6
Public transport fares	1.86	0.3	3.15	0.3	5.87	0.5	7.54	0.5	10.82	0.4	5.83	0.4
Rent payments	77.41	12.2	102.64	11.0	124.16	9.5	114.97	6.9	107.09	4.1	105.4	7.4
Soft drinks and packaged waters	2.8	0.4	4.35	0.5	6.64	0.5	6.7	0.4	8.97	0.3	5.91	0.4
Sports fees and charges	4.41	0.7	4.86	0.5	11.66	0.9	15.4	0.9	27.74	1.1	12.89	0.9
Tobacco products	9.01	1.4	12.94	1.4	14.9	1.1	14.2	0.8	12.77	0.5	12.88	0.9
Toiletries and cosmetics	6.55	1.0	10.21	1.1	13.43	1.0	18.83	1.1	26.35	1.0	15.2	1.1
Vegetables (fresh, frozen)	9.19	1.5	12.32	1.3	15.35	1.2	18	1.1	21.84	0.8	15.32	1.1
Wine	3.27	0.5	5.67	0.6	7.6	0.6	7.72	0.5	22.37	0.9	9.41	0.7
Total expenditure on all goods and services²⁴	632.03	100.0	934.32	100.0	1,301.9	100.0	1,674.73	100.0	2,589.06	100.0	1,425.03	100.0

Source: ABS 6530.0 (2017) Household Expenditure Survey Australia: Summary of Results, 2015-16 (Gross Household Income Quintiles – Estimates, Table 4.3A)

²⁴ Inclusive of the selected items above and other items not tabulated. Please note that total expenditure figures do not reflect the sum of the columns in either dollar or percentile amounts as the goods and services tabulated represent selected items only. See Australian Bureau of Statistics 6530.0 (2017) Household Expenditure Survey Australia: Summary of Results, 2015-16 (Gross Household Income Quintiles – Estimates, Table 4.3A).

Table 3-12 Estimated average household weekly expenditure on selected goods and services in Australia by state/territory by expenditure (\$) and proportion of total expenditure (%) (2015-16)

	ACT		NSW		NT ²⁵		QLD		SA		TAS		VIC		WA		AUST	
	\$	%	\$	%	\$	%	\$	%	\$	%	\$	%	\$	%	\$	%	\$	%
Audio-visual equipment (home entertainment)	11.4	0.7	7.7	0.5	10.4	0.6	7.6	0.6	6.7	0.6	5.0	0.4	8.4	0.6	7.7	0.5	7.9	0.6
Beer	10.4	0.6	12.2	0.8	19.9	1.2	10.6	0.8	8.4	0.7	12.5	1.1	11.8	0.8	11.8	0.8	11.5	0.8
Books, newspapers, magazines	8.4	0.5	6.0	0.4	5.6	0.3	6.0	0.4	6.1	0.5	10.3	0.9	6.8	0.5	6.8	0.5	6.4	0.5
Clothing and footwear	54.8	3.3	46.1	3.0	32.0	1.9	40.1	3.0	37.3	3.1	40.5	3.5	46.5	3.3	41.7	2.9	43.8	3.1
Confectionery	13.4	0.8	13.2	0.9	11.2	0.7	12.0	0.9	11.7	1.0	13.9	1.2	13.7	1.0	13.6	0.9	13.0	0.9
Cultural (cinema, theatre, concerts)	13.5	0.8	7.7	0.5	5.3	0.3	8.5	0.6	5.8	0.5	5.0	0.4	7.5	0.5	6.4	0.4	7.5	0.5
Dairy products	15.6	0.9	14.3	0.9	16.1	0.9	15.2	1.1	15.2	1.3	14.9	1.3	15.5	1.1	16.2	1.1	15.1	1.1
Gambling	2.0	0.1	5.4	0.4	5.2	0.3	3.6	0.3	1.9	0.2	5.0	0.4	4.6	0.3	6.3	0.4	4.4	0.3
Holidays-Australia (selected expenses)	46.1	2.8	29.7	1.9	90.7	5.3	28.8	2.1	28.5	2.4	31.1	2.7	31.2	2.2	35.2	2.5	31.3	2.2
Internet charges	9.4	0.6	5.9	0.4	11.0	0.6	6.6	0.5	7.4	0.6	6.2	0.5	6.2	0.4	7.5	0.5	6.5	0.5
Meals out and fast foods	99.6	6.0	90.6	5.9	83.8	4.9	68.5	5.0	66.1	5.5	60.2	5.3	84.7	5.9	71.6	5.0	80.3	5.6
Mobile telephone account	20.0	1.2	16.8	1.1	19.9	1.2	17.3	1.3	15.5	1.3	14.4	1.3	18.5	1.3	16.9	1.2	17.2	1.2
Mortgage repayments (interest)	100.3	6.0	82.6	5.4	106.3	6.3	73.7	5.4	65.1	5.5	56.2	4.9	78.9	5.5	100.0	7.0	80.2	5.6
Pay TV fees	5.0	0.3	4.9	0.3	4.2	0.2	4.6	0.3	3.8	0.3	4.1	0.4	4.4	0.3	4.6	0.3	4.6	0.3
Petrol	40.7	2.4	40.0	2.6	32.6	1.9	36.9	2.7	30.1	2.5	35.6	3.1	37.3	2.6	37.2	2.6	37.5	2.6
Public transport fares	3.7	0.2	8.3	0.5	2.5	0.1	4.2	0.3	3.3	0.3	2.4	0.2	6.5	0.5	3.6	0.2	5.8	0.4
Rent payments	105.6	6.3	122.9	8.1	190.9	11.2	108.9	8.0	80.6	6.8	58.8	5.1	91.6	6.4	101.0	7.1	105.4	7.4
Soft drinks and packaged waters	6.1	0.4	6.2	0.4	7.4	0.4	5.9	0.4	5.7	0.5	6.4	0.6	5.7	0.4	5.9	0.4	5.9	0.4
Sports fees and charges	13.0	0.8	14.0	0.9	9.9	0.6	11.5	0.8	10.9	0.9	7.5	0.7	13.0	0.9	14.1	1.0	12.9	0.9
Tobacco products	8.0	0.5	12.1	0.8	22.4	1.3	11.3	0.8	14.1	1.2	17.5	1.5	14.7	1.0	11.4	0.8	12.9	0.9
Toiletries and cosmetics	15.1	0.9	14.9	1.0	13.8	0.8	15.3	1.1	13.5	1.1	12.3	1.1	16.3	1.1	16.2	1.1	15.2	1.1
Vegetables (fresh, frozen)	19.0	1.1	15.1	1.0	18.8	1.1	13.9	1.0	14.0	1.2	14.5	1.3	16.4	1.1	16.7	1.2	15.3	1.1
Wine	9.5	0.6	10.4	0.7	10.2	0.6	7.6	0.6	8.3	0.7	6.4	0.6	10.1	0.7	8.6	0.6	9.4	0.7
Total expenditure on all goods & services²⁶	1,670.2	100	1,524.7	100	1,700.0	100	1,358.9	100	1,191.7	100	1,141.1	100	1,429.9	100	1,428.8	100	1,425.0	100

Source: ABS 6530.0 (2017) Household Expenditure Survey Australia: Summary of Results, 2015-16 (States and Territories, Table 13.9A)

²⁵ Households defined as Very Remote were excluded, accounting for about 22% of the population of NT.

²⁶ Inclusive of the selected items above and other items not tabulated. Please note that total expenditure figures do not reflect the sum of the columns in either dollar or percentile amounts as the goods and services tabulated represent selected items only. See Australian Bureau of Statistics 6530.0 (2017) Household Expenditure Survey Australia: Summary of Results, 2015-16 (States and Territories, Table 13.9A).

Table 3-13 Estimated average weekly allocation of household recreational expenditure by household gross income quintile in Australia (2015-16)

	Lowest	Second	Third	Fourth	Highest	All households
Weekly Recreational Expenditure	\$61.80	\$102.50	\$149.91	\$197.75	\$342.18	\$171.85
Recreational Spend						
Audio-visual equipment	5.1%	3.9%	4.8%	5.6%	4.1%	4.6%
Books, newspapers, magazines	6.8%	5.3%	3.9%	3.4%	2.8%	3.7%
Culture (cinema, theatre, concerts)	3.9%	4.1%	3.8%	4.7%	4.5%	4.3%
Gambling	3.7%	3.4%	3.4%	2.7%	1.8%	2.6%
Holidays - Australia	21.2%	19.1%	15.7%	16.9%	19.4%	18.2%
Sports	7.1%	4.7%	7.8%	7.8%	8.1%	7.5%

Source: Calculated from ABS 6530.0 (2017) Household Expenditure Survey Australia: Summary of Results, 2015-16 (Gross Household Income Quintiles – Estimates, Table 4.3A)